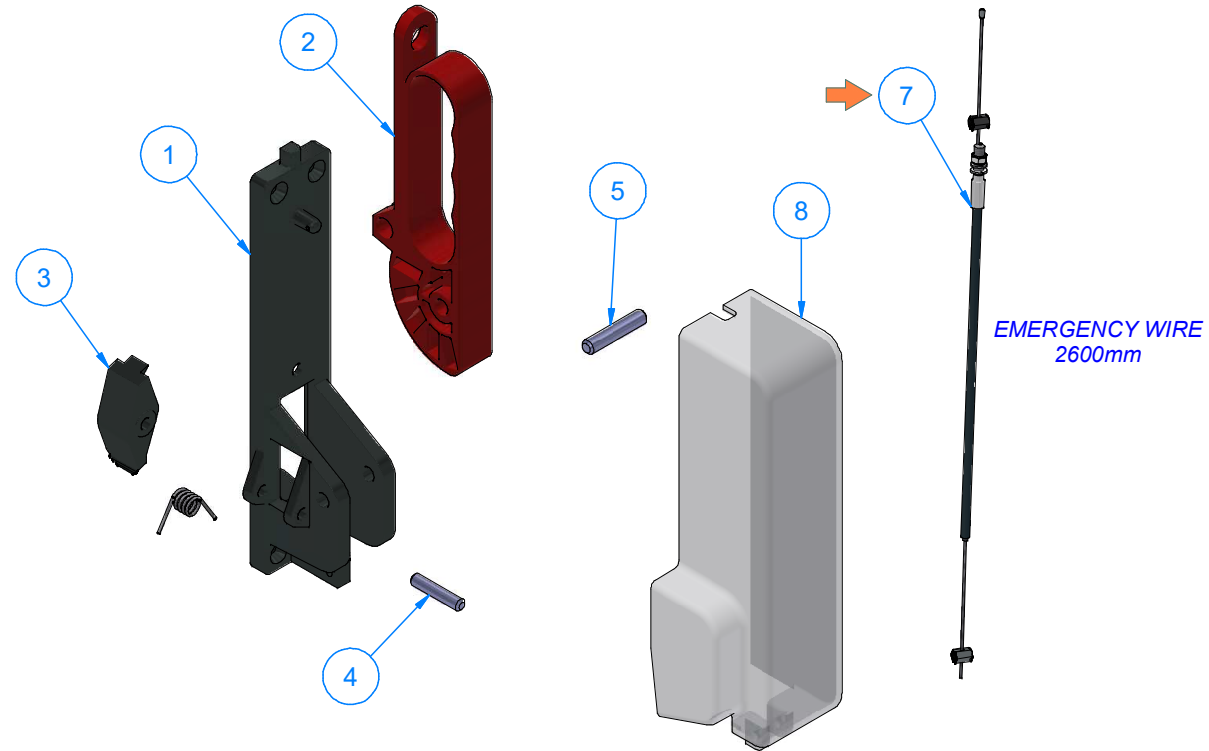
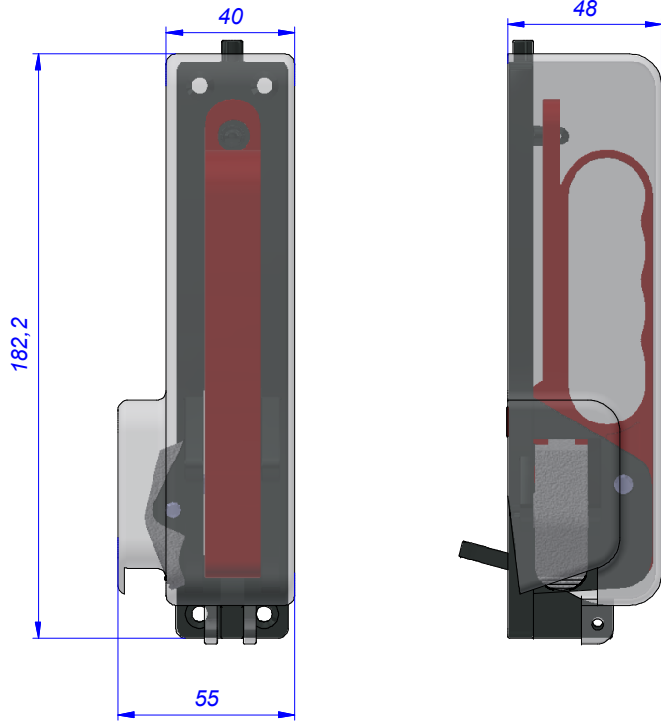


DEĞİŞİKLİK

| DEĞ.NO. | TARİH | YAPAN | AÇIKLAMA |
|---------|------------|---------|--|
| A | 14.05.2018 | A.YANIK | 10 009 0048 WAS REPLACED BY 10 009 0097. |



| NO | PART NAME | MATERIAL | PART NO | QUANTITY |
|----|-----------------------|-------------|-------------|----------|
| 8 | COVER | PLEXI GLASS | 10 011 0306 | 1 |
| 7 | WIRE 2600mm | XXX | 10 009 0097 | 1 |
| 6 | SPRING | AISI 302 | 10 022 0100 | 1 |
| 5 | BUTTON PIN | 6CE6 H6 | 10 021 3001 | 1 |
| 4 | HANDLE PIN | 6CE6 H6 | 10 021 3000 | 1 |
| 3 | HANDDLE BUTTON | 10 007 0051 | 10 007 2310 | 1 |
| 2 | EMERGENCY EXIT HANDLE | N66C33 | 10 011 0145 | 1 |
| 1 | EMERGENCY EXIT BODY | 10 007 0050 | 10 007 2300 | 1 |



| DIN NORM | | | | DIN NORM | | | | AD SOYAD | | TARİH | | İMZA | |
|--------------|-------|-----------|-------|-------------|-------|------|-------|--------------|--|------------|--|-----------|--|
| TS 16901-130 | | | | ISO 2768-mK | | | | NAME SURNAME | | DATE | | SIGNATURE | |
| ÖLÇÜ | DEĞER | ÖLÇÜ | DEĞER | ÖLÇÜ | DEĞER | ÖLÇÜ | DEĞER | | | | | | |
| >0≤3 | ±0,19 | >90≤120 | ±0,51 | 0,5≤3 | ±0,1 | | | Fatih YAVUZ | | 15.03.2024 | | | |
| >3≤6 | ±0,20 | >120≤160 | ±0,60 | | | | | Arzu YANIK | | 15.03.2024 | | | |
| >6≤10 | ±0,21 | >160≤200 | ±0,70 | | | | | Fatih YAVUZ | | 15.03.2024 | | | |
| >10≤15 | ±0,23 | >200≤250 | ±0,90 | | | | | | | | | | |
| >15≤22 | ±0,25 | >250≤315 | ±1,10 | | | | | | | | | | |
| >22≤30 | ±0,27 | >315≤400 | ±1,30 | | | | | | | | | | |
| >30≤40 | ±0,30 | >400≤500 | ±1,60 | | | | | | | | | | |
| >40≤53 | ±0,34 | >500≤630 | ±2,00 | | | | | | | | | | |
| >53≤70 | ±0,38 | >630≤800 | ±2,50 | | | | | | | | | | |
| >70≤90 | ±0,44 | >800≤1000 | ±3,00 | | | | | | | | | | |

| PARÇA ADI | PARÇA NO | MATERIAL | EMERGENCY EXIT HANDLE SET |
|---------------------------------|-------------|-------------|---------------------------|
| COVER | 10 011 0306 | PLEXI GLASS | |
| WIRE 2600mm | 10 009 0097 | XXX | |
| SPRING | 10 022 0100 | AISI 302 | |
| BUTTON PIN | 10 021 3001 | 6CE6 H6 | |
| HANDLE PIN | 10 021 3000 | 6CE6 H6 | |
| HANDDLE BUTTON | 10 007 2310 | 10 007 0051 | |
| EMERGENCY EXIT HANDLE | 10 011 0145 | N66C33 | |
| EMERGENCY EXIT BODY | 10 007 2300 | 10 007 0050 | |
| 70 150 5005 | | | |
| KAPLAMA & BOYA COVER & COLOR | | | |
| KAPLAMA & BOYA COVER & COLOR | | | |

| REVİZYON | EBAT | ÖLÇEK | SCALE |
|----------|------|-------|-------|
| A | A4 | 1/2 | |



OTOBÜS/MİNİBÜS KAPI SİSTEMLERİ
BUS & MINIBUS DOOR SYSTEMS

KRİTİK ÖLÇÜ
CRITICAL DIM.
KAPLAMA & BOYA
COVER & COLOR
KAPLAMA & BOYA
COVER & COLOR
XXX
XXX